

**QUICKIE**

**GT**

Innovative mono-frame chair offering maximum strength and performance at the lowest possible weight.



## Nothing Beats a Quickie™

You drive our design. In development, we consider how you interact with the chair and how both can work as one to maintain maximum efficiency, performance, style and fit. Before you receive the chair, the product undergoes rigorous testing above and beyond the required testing necessary for federal guidelines. Through our focus on these core elements: design, development and testing; these chairs are designed by you and for you.



Quickie GT  
with XTR suspension



Back-release lanyard



Natural Fit™ Handrim

### Lightweight Aluminum Chair

- Weighs in at less than 9.75 kg

### LIFESTYLE OPTIONS

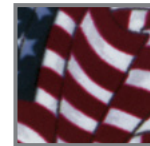
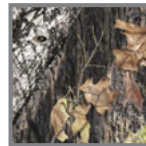
#### Give your chair some attitude

- Choose from 16 standard colour options and four Kolorfusion™ colours
- Anodized parts
- Folding backrest with back-release lanyard

#### Without sacrificing comfort

- Natural Fit™ Handrims
- Folding, lockdown, angle-adjustable backrest
- GT with XTR suspension

#### Kolorfusion™ colours



#### Anodized parts



### SPECIFICATIONS

Frame Style	Rigid - open	
Transport Weight	5.6 kg	
Overall Weight	9.7 kg	
User Weight Capacity	120 kg	
Seat Width	12" to 20"	30.5 cm to 50.8 cm
Seat Depth	12" to 22"	30.5 cm to 55.9 cm
Back Angle Adjustment	85° to 102°	
Front Seat To Floor Height	16" to 21"	40.6 cm to 53.3 cm
Rear Seat to Floor Height	13" to 20"	33 cm to 50.8 cm
Frame Angle	75°, 80°, 85°	

### WARRANTY

Warranty	Limited Lifetime
TGA #	100167