

JAY[®]

PRODUCT CATALOG



PRODUCT RATING

See “JAY Product Comparison Guide” notes to the right.

Cushions	HCPCS Code	Page #	Lateral Stability	Forward Stability	Pressure Management
JAY® Basic	E2601/E2602	6	1	1	1
JAY® GO	E2603/E2604	7	1	1	2
JAY® Soft Combi™ P	E2605/E2606	8	3	2	1
JAY® Xtreme™	E2603	9	2	2	3
JAY® Care	E2607	10	4	4	3
JAY® Easy™	E2607/E2608	11	3	2	3
JAY® Ion™	E2607/E2608	12	3	3	3
JAY® Union™	E2607/E2608	13	4	4	3
JAY® J2™	E2622/E2623 E2624/E2625	14	4	3	4
JAY® J2™ Deep Contour	E2622/E2623 E2624/E2625	15	4	4	5
JAY® J3™	E2622/E2623 E2624/E2625	16	5	4	4
Specialty Cushions					
JAY® Active	N/A	17	2	2	2
JAY® Lite	E2603/E2607	17	5	3	2
JAY® J-Gel	N/A	18	2	2	3
JAY® Duo™	E2603	18	2	3	4
JAY® GS™	N/A	19	4	3	3
JAY® J2™ Plus	N/A	19	4	3	4

Backs	HCPCS Code	Page #	Accommodating Postural Asymmetries	Modular Design to Accommodate Evolving Presentations	Lateral Stability
JAY® Basic	E2611	20	1	1	1
JAY® GO	E2611/E2612	20	1	1	1
JAY® Care	E2615	21	5	2	4
JAY® J2™ / J2™ Tall	E2613	21	2	4	2
JAY® J3™ Posterior	E2613/E2614	22	6	4	2
JAY® J3™ Posterior & Lateral	E2615	22	4	4	3
JAY® J3™ Posterior & Deep Lateral	E2620	22	4	5	5
JAY® J3™ Posterior & Deep Contour	E2620	22	4	5	5
Specialty Backs					
JAY® Focus Point	E2615	23	3	4	5
JAY® Encompass	E2615	23	3	4	5
JAY® J2 Deep Contour	E2620	24	4	4	5
JAY® J2™ Plus (Bariatric)	E2614	24	3	3	3

This guide was designed to assist you in determining which JAY Seating product will be most appropriate for your client.

CONSIDERATIONS

Our goal when creating this guide was to show:

FEATURE:	The materials or design used in the construction of each JAY seating product.
DESIGN INTENT:	The "why" of each component's inclusion in the design.
CLINICAL VALUE:	The intended clinical outcome of each component's material make-up and design intent.
COMMON CLIENT CHARACTERISTICS:	Describes the client for whom each product was designed either by clinically determined criteria or by functional needs.
JAY PRODUCT COMPARISON GUIDE:	A score per product that represents the relative ability of the product to address a clinical indication.
TECHNICAL SPECIFICATIONS AND CUSHION SIZE AVAILABILITY:	Key measurements of each JAY seating product.

JAY PRODUCT COMPARISON GUIDE

The "score" per product represents the relative ability of this product to address a clinical indication as described below. The product comparison charts are for use only to compare a JAY product to another JAY product and should not be used to compare other manufacturers' products. The ratings should not be taken as indicators of how effective the product will be in addressing any specific users requirements.

CUSHIONS

Lateral Stability

The ability of the cushion to support the pelvis and maintain its current position as the upper body moves forward through the coronal plane, as well as its to assist in preventing the pelvis from sliding forward along the cushion during such activities as foot propulsion or weight shifting.

Forward Stability

The ability of the cushion to promote a neutral pelvis during an upper body forward motion as well as its ability to assist the pelvis maintain neutral as the upper body returns to its home position along the coronal plane.

Pressure Management

The ability of the cushion to distribute loads across the entire sitting surface and to conform to bony prominences while equalizing pressure in surrounding areas.

BACKRESTS

Accommodating Postural Asymmetries

The ability of the backrest to accept external devices such as (but not limited to) headrests, laterals, and anterior trunk supports that assist the cervical, thoracic, and, at times, the lumbar spine in maintaining midline along all planes.

Modular Design to Accommodate Evolving Presentations

The ability of the backrest to accommodate external hardware, foams, or fluid pads that increase surface contact along a user's thoracic and lumbar spine to maintain midline in coronal and sagittal planes. The ability of the backrest's mounting hardware to move along both the transverse and coronal plane and maximize the backrest's surface contact area with the user.

Lateral Stability

The ability of the backrest in its standard configuration (without the addition of external lateral supports) to assist the thoracic and, at times, the lumbar spine in maintaining midline along the coronal and sagittal planes.

COMMON CLIENT CHARACTERISTICS

Evaluating Skin Integrity

In the "Common Client Characteristics" section, we address the individual's relative risk for skin breakdown. In order to simplify, we have categorized these into three weighted risks: Low risk, Moderate risk, and High risk. Below we define these categories based on the Human Risk Factors listed.

RISK FACTORS FOR SKIN

Primary Factors

- Presence or history of skin breakdown or damage on the sitting surfaces
- Cannot or does not perform functional weight shifts for any reason

Secondary Factors

- Protruding bony prominences on the sitting surfaces
- Impaired or absent sensation on the sitting surfaces

Contributing Factors

- transfer activities
- muscle atrophy
- aging skin
- orthopedic deformities
- excessive body heat
- incontinence or excessive sweating
- disease (e.g. diabetes, cancer)
- poor nutrition

Forces or conditions that can lead to skin breakdown

- Pressure, shear, friction, moisture, heat

An individual may be at **HIGH RISK** for skin breakdown if found upon assessment to present with one or more of the following:

- a primary risk factor
- one or more secondary risk factors in combination with a number of contributing factors
- may score 6-12 on the Braden scale for predicting pressure sore risk

An individual may be at **MODERATE RISK** for skin breakdown if found upon assessment to present with one or more of the following:

- no primary risk factor
- a combination of secondary and/or contributing risk factors
- may score 13-18 on the Braden scale for predicting pressure sore risk

An individual may be at **LOW RISK** for skin breakdown if found upon assessment to present with one or more of the following:

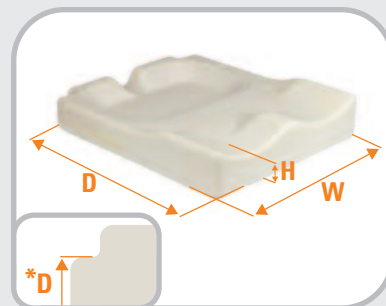
- no primary or secondary risk factors
- some contributing risk factors
- may score 19-23 on the Braden scale for predicting pressure sore risk

TECHNICAL SPECIFICATION MEASUREMENT GUIDE

Below we describe the way each type of measurement has been taken in order to have consistent comparison across the product line.

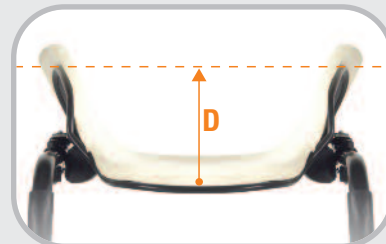
CUSHIONS

- Width:** Measured across the front of the cushion, at its widest point
- Depth:** Measured from the front to the back of the bottom of the cushion, at its longest point. (*If back post notches are present the Depth is measured to the front edge of the backpost notch.)
- Height:** Measured from the center of the femoral trough, where the femurs are loaded
- Weight:** Based on the cushion size listed in the Technical Specifications section for each product



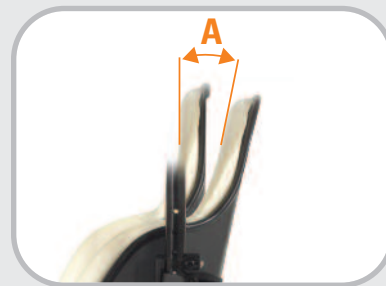
BACKRESTS

- Width:** Measured across the shell at its widest point
- Height:** Measured from the top of the shell to the bottom, at its center
- Depth:** Measured from the center point on the inside of the back shell to the "edge" of a dotted line from widest point to widest point.
- Weight:** Based on an 18" wide x 18" tall backrest



BACKREST HARDWARE

- Angle Adjustability:** The angle measured from the back's forward-most position to its rearward most position, measured from the top of the back
- Width Adjustability:** Measures the difference between the back shell width and the width of wheelchair back canes it can accommodate. i.e. A 16" wide JAY® J3™ back can be mounted on a wheelchair as wide as 18". It's width adjustability measurement is therefore 2".



JAY YOUR WAY MODIFICATIONS

In this guide, the size availability charts list standard sizes available as well as sizes available through JAY Your Way. JAY Your Way is a modification program designed to individualize and customize JAY products. From clinical improvements to colored covers, JAY Your Way can be used to create cushions and backs manufactured to users' unique individual needs. Customization opportunities are highlighted throughout this catalog. For more information on ordering a customization please visit the JAY Your Way product page on the website or call customer service at 1-800-333-4000.



The JAY® Basic cushion is a soft, mildly contoured durable foam base designed for the client at very low risk of skin breakdown, who requires mild stability.

JAY BASIC

Cushion Comparison					
Lateral Stability	1	2	3	4	5
Forward Stability	1	2	3	4	5
Pressure Management	1	2	3	4	5

Common Client Characteristics
 May be at very low risk of skin breakdown
 May be in a wheelchair for limited periods of time.

Technical Specifications	
HCPCS Code	E2601/E2602
Width Range	14" to 24"
Depth Range	16" to 20"
Weight	1.7 lbs (16"x16")
Height	2"
Weight Capacity	250 lbs 300 lbs (22-24" widths)
JAY Your Way Modifications Avail.	Yes
Positioning	No



Component	Feature	Design Intent	Clinical Value
BASE	Soft, mildly contoured foam	Provides general support and comfort	Increases sitting tolerance
	Beveled bottom edges	Reduce "hammocking" effect of seat upholstery	Improve pelvic alignment
COVER	Moisture Resistant	Protects foam base from moisture build-up	Helps with incontinence management
	Non-slip bottom surface	Keeps cushion located properly	Reduces misalignment during use, and promotes safe transfers

		WIDTH												
		12"	13"	14"	15"	16"	17"	18"	19"	20"	21"	22"	23"	24"
DEPTH	12"	JYW	JYW	JYW	JYW	JYW	JYW	JYW	JYW	JYW	N/A	N/A	N/A	N/A
	13"	JYW	JYW	JYW	JYW	JYW	JYW	JYW	JYW	JYW	N/A	N/A	N/A	N/A
	14"	JYW	JYW	●	JYW	JYW	JYW	JYW	JYW	JYW	JYW	JYW	JYW	JYW
	15"	JYW	JYW	JYW	JYW	JYW	JYW	JYW	JYW	JYW	JYW	JYW	JYW	JYW
	16"	JYW	JYW	●	●	●	●	●	●	●	JYW	JYW	JYW	JYW
	17"	JYW	JYW	JYW	JYW	●	●	●	●	JYW	JYW	JYW	JYW	JYW
	18"	JYW	JYW	●	●	●	●	●	●	●	JYW	●	JYW	●
	19"	N/A	N/A	N/A	N/A	JYW	JYW	JYW	JYW	JYW	JYW	JYW	JYW	JYW
	20"	N/A	N/A	N/A	N/A	JYW	JYW	●	●	●	JYW	●	JYW	●
	21"	N/A	N/A	N/A	N/A	N/A	N/A	N/A	N/A	N/A	JYW	JYW	JYW	JYW
	22"	N/A	N/A	N/A	N/A	N/A	N/A	N/A	N/A	N/A	JYW	JYW	●	JYW
	23"	N/A	N/A	N/A	N/A	N/A	N/A	N/A	N/A	N/A	N/A	JYW	JYW	JYW
	24"	N/A	N/A	N/A	N/A	N/A	N/A	N/A	N/A	N/A	N/A	JYW	JYW	●

Product Size Availability: ● Standard size available JYW Size available through JAY Your Way N/A Size not available

The JAY® GO cushion is a soft, mildly contoured dual-layered foam base with a Dartex® moisture-resistant cover designed for the client at low risk of skin breakdown, who requires mild stability.

JAY GO

Cushion Comparison					
Lateral Stability	1	2	3	4	5
Forward Stability	1	2	3	4	5
Pressure Management	2	3	4	5	

Common Client Characteristics

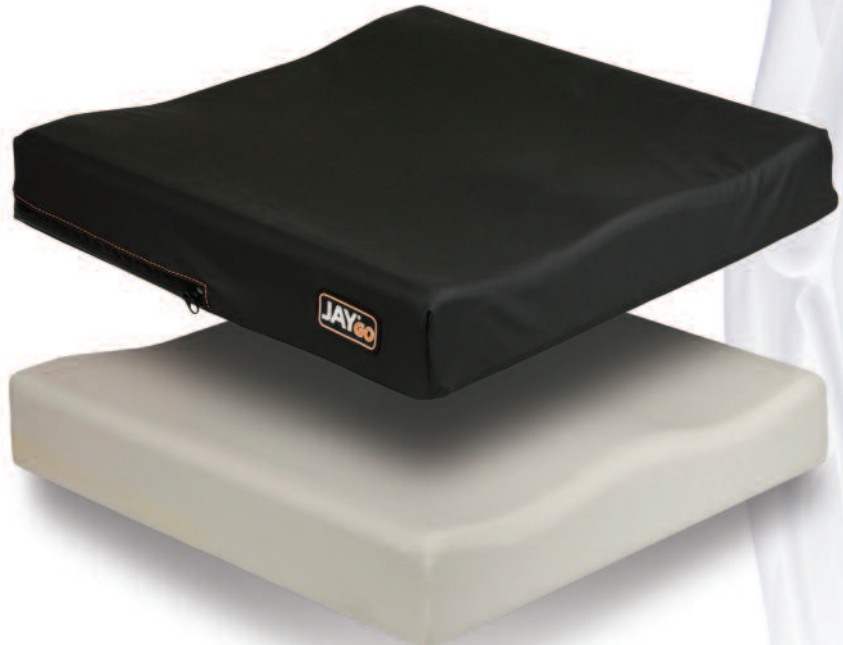
May be at low risk of skin breakdown

May require a comfortable seating surface for symmetrical alignment

May be in a wheelchair for limited periods of time

Technical Specifications

HCPCS Code	E2603/E2604
Width Range	14" to 24"
Depth Range	14" to 24"
Weight	2.5 lbs (16"x18")
Height	3"
Weight Capacity	300 lbs 500 lbs (22-24" widths)
JAY Your Way Modifications Avail.	Yes
Positioning	No



Component	Feature	Design Intent	Clinical Value
BASE	Mildly contoured, dual-layered foam	Provides comfort with added stability and decreases peak pressures	Increases sitting tolerance
COVER	Dartex® coated Lycra® outer cover with Aquaguard® zipper and anti-wicking thread	Protects foam base from moisture build up and is easy to clean	Helps with incontinence management

		WIDTH													
		12"	13"	14"	15"	16"	17"	18"	19"	20"	21"	22"	23"	24"	
DEPTH	12"	N/A	N/A	N/A	N/A	N/A	N/A	N/A	N/A	N/A	N/A	N/A	N/A	N/A	N/A
	13"	N/A	N/A	N/A	N/A	N/A	N/A	N/A	N/A	N/A	N/A	N/A	N/A	N/A	N/A
	14"	N/A	N/A	●	●	●	●	●	N/A	N/A	N/A	N/A	N/A	N/A	N/A
	15"	N/A	N/A	●	●	●	●	●	●	●	N/A	N/A	N/A	N/A	N/A
	16"	N/A	N/A	●	●	●	●	●	●	●	N/A	N/A	N/A	N/A	N/A
	17"	N/A	N/A	●	●	●	●	●	●	●	●	●	N/A	N/A	N/A
	18"	N/A	N/A	●	●	●	●	●	●	●	●	●	●	N/A	N/A
	19"	N/A	N/A	●	●	●	●	●	●	●	●	●	●	●	●
	20"	N/A	N/A	●	●	●	●	●	●	●	●	●	●	●	●
	21"	N/A	N/A	N/A	●	●	●	●	●	●	●	●	●	●	●
	22"	N/A	N/A	N/A	N/A	●	●	●	●	●	●	●	●	●	●
	23"	N/A	N/A	N/A	N/A	N/A	●	●	●	●	●	●	●	●	●
	24"	N/A	N/A	N/A	N/A	N/A	N/A	●	●	●	●	●	●	●	●

Product Size Availability: ● Standard size available JYW Size available through JAY Your Way N/A Size not available

The JAY® Soft Combi™ P cushion is a lightweight, soft and mildly contoured foam cushion designed for the client at low risk of skin breakdown, who requires mild to moderate postural support.

JAY SOFT COMBI™ P

Cushion Comparison

Lateral Stability			3	4	5
Forward Stability		2	3	4	5
Pressure Management	1	2	3	4	5

Common Client Characteristics

May be at very low risk of skin breakdown

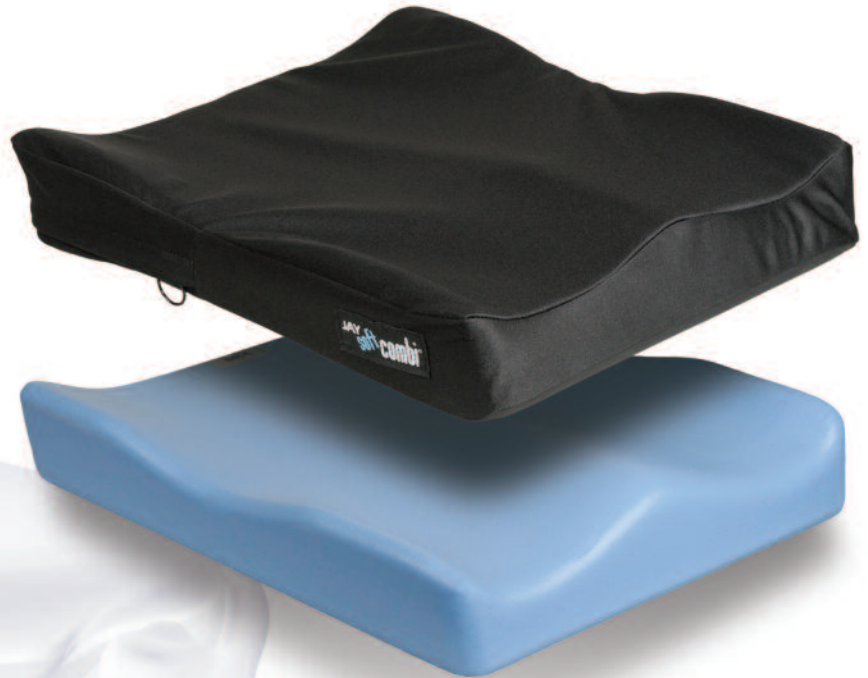
May have mild positioning needs

May require a comfortable seating surface

May be in a wheelchair for limited periods of time

Technical Specifications

HCPCS Code	E2605/E2606
Width Range	14" to 24"
Depth Range	14" to 18"
Weight	2.8 lbs (16"x16")
Height	3"
Weight Capacity	250 lbs 300 lbs (22-24" widths)
JAY Your Way Modifications Avail.	Yes
Positioning	Yes



Component	Feature	Design Intent	Clinical Value
BASE	Pre-contoured, high-resiliency foam	Provides positioning of the pelvis and thighs	Improves orthopedic alignment
	Foam outer coating	Protects foam base from moisture build up and is easy to clean	Helps with incontinence management
COVER	Moisture resistant cover	Protects foam base from moisture build up	Helps with incontinence management
	Non-slip bottom surface	Keeps cushion located properly	Reduces misalignment during use, and promotes safe transfers

		WIDTH													
		12"	13"	14"	15"	16"	17"	18"	19"	20"	21"	22"	23"	24"	
DEPTH	12"	N/A	N/A	N/A	N/A	N/A	N/A	N/A	N/A	N/A	N/A	N/A	N/A	N/A	
	13"	N/A	N/A	N/A	N/A	N/A	N/A	N/A	N/A	N/A	N/A	N/A	N/A	N/A	
	14"	N/A	N/A	●	N/A	JYW	JYW	JYW	JYW	JYW	N/A	N/A	N/A	N/A	
	15"	N/A	N/A	JYW	N/A	JYW	JYW	JYW	JYW	JYW	N/A	N/A	N/A	N/A	
	16"	N/A	N/A	●	JYW	●	●	●	●	●	N/A	JYW	N/A	JYW	
	17"	N/A	N/A	JYW	JYW	●	●	●	●	●	N/A	N/A	JYW	N/A	JYW
	18"	N/A	N/A	●	●	●	●	●	●	●	N/A	●	N/A	●	
	19"	N/A	N/A	N/A	N/A	JYW	N/A	JYW	JYW	JYW	N/A	JYW	N/A	JYW	
	20"	N/A	N/A	N/A	N/A	●	N/A	●	●	●	●	N/A	●	N/A	●
	21"	N/A	N/A	N/A	N/A	N/A	N/A	N/A	N/A	N/A	N/A	N/A	JYW	N/A	JYW
	22"	N/A	N/A	N/A	N/A	N/A	N/A	N/A	N/A	N/A	N/A	N/A	N/A	N/A	●
	23"	N/A	N/A	N/A	N/A	N/A	N/A	N/A	N/A	N/A	N/A	N/A	N/A	N/A	JYW
	24"	N/A	N/A	N/A	N/A	N/A	N/A	N/A	N/A	N/A	N/A	N/A	N/A	N/A	●

Product Size Availability: ● Standard size available JYW Size available through JAY Your Way N/A Size not available

The JAY® Xtreme™ is a lightweight foam cushion designed for the active client at low risk of skin breakdown, who requires mild to moderate positioning. The soft foam base allows the client to sit up front comfortably.

JAY XTREME™

Cushion Comparison				
Lateral Stability	2	3	4	5
Forward Stability	2	3	4	5
Pressure Management	3	4	5	

Common Client Characteristics	
May be at very low risk of skin breakdown	
May require mild postural support	
May have symmetrical posture	
May be in a wheelchair for extended periods of time	

Technical Specifications	
HCPCS Code	E2603
Width Range	14" to 20"
Depth Range	14" to 20"
Weight	3.84 lbs (16"x16")
Height	2.25"
Weight Capacity	250 lbs
JAY Your Way Modifications Avail.	Yes
Positioning	No



Component	Feature	Design Intent	Clinical Value
BASE	Non-contoured, high resiliency foam	Allows forward sitting	Enhances independence during Activities of Daily Living (ADLs)
	Rear coccyx notch	Reduces peak pressures	Reduces risk of skin breakdown over coccyx bone
INSERT	JAY Flow™ Fluid tripad	Consistently ensures proper fluid placement by reducing fluid migration	Reduces risk of skin breakdown
INNER COVER	Built in Modular thigh support compartments	Easily accommodate various positioning components	Optimize midline pelvic alignment
	Nylon incontinent inner cover	Protects foam base from moisture build-up	Helps with incontinence management
COVER	Standard with 2 covers	Allow for continued use	Allow for optimal product use during cleaning
	Tritex cover	Reduces surface tension	Optimizes pelvic immersion
	Low shear cover	Reduces shear	Reduces friction during transfers

		WIDTH												
		12"	13"	14"	15"	16"	17"	18"	19"	20"	21"	22"	23"	24"
DEPTH	12"	N/A	JYW	JYW	JYW	JYW	JYW	JYW	N/A	N/A	N/A	N/A	N/A	N/A
	13"	N/A	JYW	JYW	JYW	JYW	JYW	JYW	N/A	N/A	N/A	N/A	N/A	N/A
	14"	N/A	JYW	●	JYW	JYW	JYW	JYW	N/A	N/A	N/A	N/A	N/A	N/A
	15"	N/A	JYW	JYW	●	JYW	JYW	JYW	N/A	N/A	N/A	N/A	N/A	N/A
	16"	N/A	N/A	●	●	●	●	●	JYW	JYW	N/A	N/A	N/A	N/A
	17"	N/A	N/A	N/A	JYW	●	●	JYW	JYW	JYW	N/A	N/A	N/A	N/A
	18"	N/A	N/A	N/A	JYW	●	JYW	●	JYW	JYW	N/A	N/A	N/A	N/A
	19"	N/A	N/A	N/A	JYW	JYW	JYW	JYW	JYW	JYW	N/A	N/A	N/A	N/A
	20"	N/A	N/A	N/A	JYW	●	JYW	●	JYW	●	N/A	N/A	N/A	N/A
	21"	N/A	N/A	N/A	N/A	N/A	N/A	N/A	N/A	N/A	N/A	N/A	N/A	N/A
	22"	N/A	N/A	N/A	N/A	N/A	N/A	N/A	N/A	N/A	N/A	N/A	N/A	N/A
	23"	N/A	N/A	N/A	N/A	N/A	N/A	N/A	N/A	N/A	N/A	N/A	N/A	N/A
24"	N/A	N/A	N/A	N/A	N/A	N/A	N/A	N/A	N/A	N/A	N/A	N/A	N/A	

Product Size Availability: ● Standard size available JYW Size available through JAY Your Way N/A Size not available

The JAY® Care is a simple, moisture-resistant cushion designed to accommodate the client with a fixed posterior pelvic tilt utilizing sling style wheelchair upholstery.

JAY CARE

Cushion Comparison		
Lateral Stability	4	5
Forward Stability	4	5
Pressure Management	3	4 5

Common Client Characteristics	
May be at a moderate risk of skin breakdown	
May have a fixed posterior pelvic tilt	
May have moderate positioning needs	
May have symmetrical posture	
May be in a wheelchair for extended periods of time	

Technical Specifications	
HCPCS Code	E2607
Width Range	16" to 20"
Depth Range	16" to 20"
Weight	7.2 lbs (16"x16")
Height	2.5"
Weight Capacity	250 lbs
JAY Your Way Modifications Avail.	Yes
Positioning	Yes



Component	Feature	Design Intent	Clinical Value
BASE	Pre-contoured foam with extended well	Accommodates fixed posterior pelvic tilt	Encourages orthopedic alignment and increased sitting tolerance
	Reinforced curved bottom	Reduces "hammocking" effect of seat upholstery	Provides a level base of support which promotes proper pelvic alignment
	Moisture resistant base	Protects foam base from moisture build up and is easy to clean	Helps with incontinence management
	Integrated JAY Flow™ fluid compartmentalized pad	Ensures proper fluid placement to better accommodate a fixed posterior pelvic tilt	Reduces risk of skin breakdown
COVER	Standard with 2 covers	Allow for continued use	Allow for optimal product use during cleaning

		WIDTH													
		12"	13"	14"	15"	16"	17"	18"	19"	20"	21"	22"	23"	24"	
DEPTH	12"	N/A	N/A	N/A	N/A	N/A	N/A	N/A	N/A	N/A	N/A	N/A	N/A	N/A	N/A
	13"	N/A	N/A	N/A	N/A	N/A	N/A	N/A	N/A	N/A	N/A	N/A	N/A	N/A	N/A
	14"	N/A	N/A	N/A	N/A	N/A	N/A	N/A	N/A	N/A	N/A	N/A	N/A	N/A	N/A
	15"	N/A	N/A	N/A	N/A	N/A	N/A	N/A	N/A	N/A	N/A	N/A	N/A	N/A	N/A
	16"	N/A	N/A	N/A	N/A	N/A	N/A	N/A	N/A	N/A	N/A	N/A	N/A	N/A	N/A
	17"	N/A	N/A	N/A	N/A	N/A	N/A	N/A	N/A	N/A	N/A	N/A	N/A	N/A	N/A
	18"	N/A	N/A	N/A	N/A	●	N/A	●	N/A	●	N/A	N/A	N/A	N/A	N/A
	19"	N/A	N/A	N/A	N/A	N/A	N/A	N/A	N/A	N/A	N/A	N/A	N/A	N/A	N/A
	20"	N/A	N/A	N/A	N/A	●	N/A	●	N/A	N/A	N/A	N/A	N/A	N/A	N/A
	21"	N/A	N/A	N/A	N/A	N/A	N/A	N/A	N/A	N/A	N/A	N/A	N/A	N/A	N/A
	22"	N/A	N/A	N/A	N/A	N/A	N/A	N/A	N/A	N/A	N/A	N/A	N/A	N/A	N/A
	23"	N/A	N/A	N/A	N/A	N/A	N/A	N/A	N/A	N/A	N/A	N/A	N/A	N/A	N/A
	24"	N/A	N/A	N/A	N/A	N/A	N/A	N/A	N/A	N/A	N/A	N/A	N/A	N/A	N/A

Product Size Availability: ● Standard size available JYW Size available through JAY Your Way N/A Size not available

The JAY® Easy™ is a skin protection and positioning cushion composed of a hi-resiliency foam base, built-in lateral and medial thigh supports that can accommodate a curved or flat seating surface, and JAY® Flow™ fluid tripod.

JAY EASY™

Cushion Comparison				
Lateral Stability	3	4	5	
Forward Stability	2	3	4	5
Pressure Management	3	4	5	

Common Client Characteristics	
May be at moderate to high risk of skin breakdown	
May have moderate positioning requirements	
May have mild asymmetrical posture	
May be in a wheelchair for extended periods of time	

Technical Specifications	
HPCPS Code	E2607
Width Range	14" to 24"
Depth Range	14" to 24"
Weight	4 lbs (16"x16")
Height	3"
Weight Capacity	250 lbs
JAY Your Way Modifications Avail.	Yes
Positioning	Yes



Component	Feature	Design Intent	Clinical Value
BASE	Pre-contoured, high-resiliency foam	Provides positioning of the pelvis and thighs	Encourages improved orthopedic alignment
	Optional curved bottom	Reduces "hammocking" effect of seat upholstery	Provides a level base of support which promotes proper pelvic alignment
INSERT	JAY Flow™ fluid tripod	Consistently ensures proper fluid placement by reducing fluid migration	Reduces risk of skin breakdown
COVER	Moisture resistant cover	Protects foam base from moisture build up	Helps with incontinence management
	Non-slip bottom surface	Keeps cushion located properly	Reduces misalignment during use and promotes safe transfers

		WIDTH												
		12"	13"	14"	15"	16"	17"	18"	19"	20"	21"	22"	23"	24"
DEPTH	12"	JYW	JYW	JYW	N/A	N/A	N/A	N/A	N/A	N/A	N/A	N/A	N/A	N/A
	13"	JYW	JYW	JYW	JYW	JYW	JYW	N/A	N/A	N/A	N/A	N/A	N/A	N/A
	14"	JYW	JYW	●	JYW	JYW	JYW	JYW	JYW	JYW	N/A	N/A	N/A	N/A
	15"	N/A	JYW	JYW	●	●	●	JYW	JYW	JYW	N/A	N/A	N/A	N/A
	16"	JYW	JYW	●	●	●	●	●	●	●	JYW	JYW	JYW	JYW
	17"	N/A	JYW	JYW	●	●	●	●	●	JYW	JYW	JYW	JYW	JYW
	18"	JYW	JYW	●	JYW	●	●	●	●	●	JYW	●	JYW	●
	19"	N/A	N/A	N/A	N/A	JYW	JYW	JYW	JYW	JYW	JYW	JYW	JYW	JYW
	20"	N/A	N/A	N/A	N/A	JYW	JYW	●	●	●	JYW	●	JYW	●
	21"	N/A	N/A	N/A	N/A	N/A	N/A	N/A	N/A	N/A	JYW	JYW	JYW	JYW
	22"	N/A	N/A	N/A	N/A	N/A	N/A	N/A	N/A	N/A	JYW	JYW	●	JYW
	23"	N/A	N/A	N/A	N/A	N/A	N/A	N/A	N/A	N/A	N/A	N/A	JYW	JYW
	24"	N/A	N/A	N/A	N/A	N/A	N/A	N/A	N/A	N/A	N/A	N/A	JYW	JYW

Product Size Availability: ● Standard size available JYW Size available through JAY Your Way N/A Size not available

The JAY® Ion™ is a comfortable skin protection and positioning cushion composed of a multi-layered foam base, moisture resistant inner cover, and an anti-microbial outer cover.

JAY ION™

Cushion Comparison			
Lateral Stability	3	4	5
Forward Stability	3	4	5
Pressure Management	3	4	5

Common Client Characteristics	
May be at moderate risk of skin breakdown	
May be able to perform independent weight shifts	
May have moderate positioning needs	
May be in a wheelchair for extended periods of time	

Technical Specifications	
HCPCS Code	E2607/E2608
Width Range	14" to 24"
Depth Range	14" to 24"
Weight	3.5 lbs (18"x18")
Height	4"
Weight Capacity	300 lbs 500 lbs (22-24" widths)
JAY Your Way Modifications Avail.	Yes
Positioning	No



Component	Feature	Design Intent	Clinical Value
BASE	Multilayered foam base with optimized densities by width	Optimizes cushion performance by user weight ranges	Encourages improved orthopedic alignment and accommodates individual user needs
	Soft Visco™ memory foam top layer	Enhances comfort	Increases sitting tolerance
INNER COVER	Inner cover with Aquaquard™ zipper and anti-wicking thread	Protects foam from moisture build up and is easy to clean	Helps with Incontinence management
COVER	Foam spacer layer	Dissipates heat and moisture	Reduces risk of skin breakdown
	X-static® silver thread stretch outer cover	Reduce surface tension and resist bacterial growth	Helps prevent bacterial growth and reduces risk of skin breakdown

		WIDTH												
		12"	13"	14"	15"	16"	17"	18"	19"	20"	21"	22"	23"	24"
DEPTH	12"	N/A	N/A	N/A	N/A	N/A	N/A	N/A	N/A	N/A	N/A	N/A	N/A	N/A
	13"	N/A	N/A	N/A	N/A	N/A	N/A	N/A	N/A	N/A	N/A	N/A	N/A	N/A
	14"	N/A	N/A	●	●	●	●	●	N/A	N/A	N/A	N/A	N/A	N/A
	15"	N/A	N/A	●	●	●	●	●	●	N/A	N/A	N/A	N/A	N/A
	16"	N/A	N/A	●	●	●	●	●	●	N/A	N/A	N/A	N/A	N/A
	17"	N/A	N/A	●	●	●	●	●	●	●	N/A	N/A	N/A	N/A
	18"	N/A	N/A	●	●	●	●	●	●	●	●	N/A	N/A	N/A
	19"	N/A	N/A	N/A	●	●	●	●	●	●	●	●	●	●
	20"	N/A	N/A	N/A	●	●	●	●	●	●	●	●	●	●
	21"	N/A	N/A	N/A	●	●	●	●	●	●	●	●	●	●
	22"	N/A	N/A	N/A	N/A	●	●	●	●	●	●	●	●	●
	23"	N/A	N/A	N/A	N/A	N/A	●	●	●	●	●	●	●	●
	24"	N/A	N/A	N/A	N/A	N/A	N/A	●	●	●	●	●	●	●

Product Size Availability: ● Standard size available JYW Size available through JAY Your Way N/A Size not available

The JAY® Union™ is a versatile, comfortable, skin protection and positioning cushion composed of a dynamic fluid and foam layering system, moisture resistant inner cover, and an anti-microbial outer cover.

JAY UNION™

Cushion Comparison		
Lateral Stability	4	5
Forward Stability	4	5
Pressure Management	3	4 5

Common Client Characteristics
 May be at moderate to high risk of skin breakdown
 May be able to perform independent weight shifts
 May have moderate positioning needs
 May be in a wheelchair for extended periods of time

Technical Specifications	
HCPCS Code	E2607/E2608
Width Range	14" to 24"
Depth Range	14" to 24"
Weight	5.25 lbs (16"x18")
Height	4.5"
Weight Capacity	300 lbs 500 lbs (22-24" widths)
JAY Your Way Modifications Avail.	Yes
Positioning	No



Component	Feature	Design Intent	Clinical Value
BASE	Pre-contoured, hi-resiliency foam with additional lateral pelvic support	Provides positioning of the pelvis and thighs	Encourages improved orthopedic alignment
	Soft Visco™ memory foam top layer with extra layer over pelvic loading area	Enhances comfort	Increases sitting tolerance
INSERT	JAY Flow™ fluid tripod	Consistently ensures proper fluid placement by reducing fluid migration	Reduces risk of skin breakdown
INNER COVER	Inner cover with Aquaquard™ zipper and anti-wicking thread	Protects foam base from moisture build up and is easy to clean	Helps with incontinence management
COVER	Foam spacer layer	Dissipates heat and moisture	Reduces risk of skin breakdown
	X-static® silver thread stretch outer cover	Reduces surface tension and resist bacterial growth	Helps prevent bacterial growth and reduces risk of skin breakdown

		WIDTH													
		12"	13"	14"	15"	16"	17"	18"	19"	20"	21"	22"	23"	24"	
DEPTH	12"	N/A	N/A	N/A	N/A	N/A	N/A	N/A	N/A	N/A	N/A	N/A	N/A	N/A	
	13"	N/A	N/A	N/A	N/A	N/A	N/A	N/A	N/A	N/A	N/A	N/A	N/A	N/A	
	14"	N/A	N/A	•	•	•	•	•	N/A	N/A	N/A	N/A	N/A	N/A	
	15"	N/A	N/A	•	•	•	•	•	•	N/A	N/A	N/A	N/A	N/A	
	16"	N/A	N/A	•	•	•	•	•	•	N/A	N/A	N/A	N/A	N/A	
	17"	N/A	N/A	•	•	•	•	•	•	•	•	N/A	N/A	N/A	
	18"	N/A	N/A	•	•	•	•	•	•	•	•	•	N/A	•	
	19"	N/A	N/A	N/A	•	•	•	•	•	•	•	•	•	•	
	20"	N/A	N/A	N/A	•	•	•	•	•	•	•	•	•	•	
	21"	N/A	N/A	N/A	N/A	N/A	•	•	•	•	•	•	•	•	
	22"	N/A	N/A	N/A	N/A	N/A	N/A	•	•	•	•	•	•	•	
	23"	N/A	N/A	N/A	N/A	N/A	N/A	N/A	•	•	•	•	•	•	
	24"	N/A	N/A	N/A	N/A	N/A	N/A	N/A	N/A	•	•	•	•	•	

Product Size Availability: • Standard size available JYW Size available through JAY Your Way N/A Size not available

The JAY® J2™ is a pre-contoured foam cushion that features a JAY Flow™ fluid tripod for superior skin protection and an easy to modify base with optional positioning components for optimal stability.

JAY J2™

Cushion Comparison		
Lateral Stability	4	5
Forward Stability	3	4 5
Pressure Management	4	5

- Common Client Characteristics**
- May be at high risk of skin breakdown
 - May not be able to perform independent weight shifts
 - May have changing postural needs over time
 - May have aggressive positioning needs
 - May be in a wheelchair for extended periods of time
 - May experience weight loss

Technical Specifications	
HCPCS Code	E2622/3 & E2624/5
Width Range	14" to 24"
Depth Range	14" to 20"
Weight	5.5 lbs (16"x16")
Height	2.5"
Weight Capacity	250 lbs
JAY Your Way Modifications Avail.	Yes
Positioning	Yes



Component	Feature	Design Intent	Clinical Value
BASE	Pre-contoured structural closed cell foam	Provides lateral and forward stability that is easy to modify	Encourages orthopedic alignment, increased sitting tolerance and accommodates changing user needs
	Extensive variety of positioning components (through JAY Box of Accessories or JAY Your Way)	Provides optimal stability	Encourages orthopedic alignment and accommodates individual user needs
INSERT	JAY Flow™ fluid tripod	Consistently ensures proper fluid placement by reducing fluid migration	Reduces risk of skin breakdown
COVER	Stretch outer cover	Reduces surface tension	Promotes proper immersion and reduces risk of skin breakdown
	AirExchange™ outer cover	Dissipates heat and moisture	Reduces risk of skin breakdown
	Incontinence outer cover	Protects foam base from moisture build-up	Helps with incontinence management

		WIDTH												
		12"	13"	14"	15"	16"	17"	18"	19"	20"	21"	22"	23"	24"
DEPTH	12"	JYW	JYW	JYW	JYW	JYW	JYW	JYW	JYW	JYW	JYW	JYW	JYW	JYW
	13"	JYW	JYW	JYW	JYW	JYW	JYW	JYW	JYW	JYW	JYW	JYW	JYW	JYW
	14"	JYW	JYW	●	JYW	●	JYW	JYW	JYW	JYW	JYW	JYW	JYW	JYW
	15"	JYW	JYW	JYW	JYW	JYW	JYW	JYW	JYW	JYW	JYW	JYW	JYW	JYW
	16"	JYW	JYW	JYW	JYW	●	JYW	●	JYW	●	JYW	JYW	JYW	JYW
	17"	JYW	JYW	JYW	JYW	JYW	●	JYW	JYW	JYW	JYW	JYW	JYW	JYW
	18"	JYW	JYW	JYW	JYW	●	JYW	●	JYW	●	JYW	JYW	JYW	JYW
	19"	JYW	JYW	JYW	JYW	JYW	JYW	JYW	JYW	JYW	JYW	JYW	JYW	JYW
	20"	N/A	N/A	JYW	JYW	JYW	JYW	●	JYW	●	JYW	JYW	JYW	●
	21"	N/A	N/A	JYW	JYW	JYW	JYW	JYW	JYW	JYW	JYW	JYW	JYW	JYW
	22"	N/A	N/A	JYW	JYW	JYW	JYW	JYW	JYW	JYW	JYW	JYW	JYW	JYW
	23"	N/A	N/A	JYW	JYW	JYW	JYW	JYW	JYW	JYW	JYW	JYW	JYW	JYW
24"	N/A	N/A	JYW	JYW	JYW	JYW	JYW	JYW	JYW	JYW	JYW	JYW	JYW	

Product Size Availability: ● Standard size available JYW Size available through JAY Your Way N/A Size not available

The JAY® J2™ Deep Contour is a pre-contoured foam cushion that features a 3" deep pelvic loading area, a JAY Flow™ fluid tripad for superior skin protection, and an easy to modify base for optimal stability.

JAY J2™ DEEP CONTOUR

Cushion Comparison		
Lateral Stability	4	5
Forward Stability	4	5
Pressure Management		5

Common Client Characteristics	
May be at extremely high risk of skin breakdown	
May not be able to perform independent weight shifts	
May have changing postural needs over time	
May be in a wheelchair for extended periods of time	
May experience weight loss	

Technical Specifications	
HPCPS Code	E2622/3 & E2624/5
Width Range	14" to 24"
Depth Range	14" to 20"
Weight	6.27 lbs (16"x16")
Height	4.5"
Weight Capacity	250 lbs
JAY Your Way Modifications Avail.	Yes
Positioning	Yes



Component	Feature	Design Intent	Clinical Value
BASE	Pre-contoured structural closed cell foam	Provides lateral and forward stability that is easy to modify	Encourages orthopedic alignment, increased sitting tolerance and accommodates changing user needs
	Increased well depth	Provides optimal immersion and increased stability	Encourages orthopedic alignment and accommodates individual user needs
INSERT	JAY Flow™ fluid tripad with increased fluid volume	Consistently ensures proper fluid placement by reducing fluid migration	Reduces risk of skin breakdown
COVER	Stretch outer cover	Reduces surface tension	Promotes proper immersion and reduces risk of skin breakdown
	AirExchange™ outer cover	Dissipates heat and moisture	Reduces risk of skin breakdown
	Incontinence outer cover	Protects foam base from moisture build up	Helps with incontinence management

		WIDTH												
		12"	13"	14"	15"	16"	17"	18"	19"	20"	21"	22"	23"	24"
DEPTH	12"	N/A	JYW	JYW	N/A	N/A	N/A	N/A	N/A	N/A	N/A	N/A	N/A	N/A
	13"	N/A	JYW	JYW	JYW	N/A	N/A	N/A	N/A	N/A	N/A	N/A	N/A	N/A
	14"	N/A	JYW	●	JYW	JYW	JYW	JYW	JYW	JYW	JYW	JYW	JYW	JYW
	15"	N/A	JYW	JYW	●	JYW	JYW	JYW	JYW	JYW	JYW	JYW	JYW	JYW
	16"	N/A	JYW	●	JYW	●	JYW	●	JYW	●	JYW	●	JYW	JYW
	17"	N/A	N/A	JYW	●	JYW	●	JYW	JYW	JYW	JYW	JYW	JYW	JYW
	18"	N/A	N/A	JYW	JYW	●	JYW	●	JYW	●	JYW	●	JYW	●
	19"	N/A	N/A	JYW	JYW	JYW	JYW	JYW	JYW	JYW	JYW	JYW	JYW	JYW
	20"	N/A	N/A	N/A	JYW	●	JYW	●	JYW	●	JYW	JYW	JYW	JYW
	21"	N/A	N/A	N/A	JYW	JYW	JYW	JYW	JYW	JYW	JYW	JYW	JYW	JYW
	22"	N/A	N/A	N/A	JYW	JYW	JYW	JYW	JYW	JYW	JYW	JYW	JYW	JYW
	23"	N/A	N/A	N/A	JYW	JYW	JYW	JYW	JYW	JYW	JYW	JYW	JYW	JYW
	24"	N/A	N/A	N/A	JYW	JYW	JYW	JYW	JYW	JYW	JYW	JYW	JYW	JYW

Product Size Availability: ● Standard size available JYW Size available through JAY Your Way N/A Size not available

The JAY® J3™ cushion provides outstanding stability and optimal pressure distribution for the client at high risk of skin breakdown, and offers the choice of JAY Flow™ fluid or ROHO DRY FLOATATION® air inserts.

JAY J3™

Cushion Comparison		
Lateral Stability		5
Forward Stability	4	5
Pressure Management	4	5
Common Client Characteristics		
May be at high risk for skin breakdown		
May not be able to perform independent weight shifts		
May have changing postural needs over time		
May have aggressive positioning needs		
May be in a wheelchair for extended periods of time		
Technical Specifications		
HCPCS Code	E2622/3 & E2624/5	
Width Range	12" to 24"	
Depth Range	12" to 24"	
Weight	4.5 lbs (16"x18" w/fluid) 2.9 lbs (16"x18" w/dual air)	
Height	3.5" (loaded w/175 lbs)	
Weight Capacity	500 lbs	
JAY Your Way	Yes	
Mods Avail		
Positioning	Yes	



Component	Feature	Design Intent	Clinical Value
BASE	Pre-contoured structural closed cell foam available in two depths	Provides lateral and forward stability that is easy to modify	Encourages orthopedic alignment, increased sitting tolerance and accommodates changing user needs
	Extensive variety of positioning components	Provides optimal stability	Encourages orthopedic alignment and accommodates individual user needs
	Customizable pelvic loading area (PLA)	Lateral stability, forward stability, and pressure distribution	Encourages orthopedic alignment
INSERT	Optional JAY Flow™ fluid pad available in Factory Filled (FF) and Field Variable (FV) options	Allows customization of fluid levels direct from the factory or in the field to optimize immersion and accommodate asymmetric postures	Reduces risk of skin breakdown
	Optional ROHO DRY FLOATATION® air bladder available in single valve or dual valve options	Allows customization of air levels to optimize immersion and accommodate asymmetric postures	Reduces risk of skin breakdown
COVER	Stretch outer cover	Reduces surface tension	Promotes proper immersion and reduces risk of skin breakdown
	Microclimatic outer cover	Dissipates heat and moisture	Reduces risk of skin breakdown
	Incontinence outer cover	Protects foam base from moisture build up	Helps with incontinence management

		WIDTH													
		12"	13"	14"	15"	16"	17"	18"	19"	20"	21"	22"	23"	24"	
DEPTH	12"	●	JYW	●	JYW	N/A	N/A	N/A	N/A	N/A	N/A	N/A	N/A	N/A	
	13"	JYW	JYW	JYW	JYW	N/A	N/A	N/A	N/A	N/A	N/A	N/A	N/A	N/A	
	14"	●	JYW	●	JYW	JYW	JYW	JYW	JYW	JYW	JYW	JYW	JYW	JYW	
	15"	JYW	JYW	JYW	●	●	●	JYW	JYW	JYW	JYW	JYW	JYW	JYW	
	16"	JYW	JYW	●	●	●	●	●	●	●	JYW	JYW	JYW	JYW	
	17"	JYW	JYW	JYW	●	●	●	●	●	JYW	JYW	JYW	JYW	JYW	
	18"	JYW	JYW	●	JYW	●	●	●	●	●	●	●	●	●	
	19"	JYW	JYW	JYW	JYW	JYW	JYW	JYW	JYW	JYW	●	●	●	●	
	20"	JYW	JYW	JYW	JYW	●	JYW	●	●	●	●	●	●	●	
	21"	JYW	JYW	JYW	JYW	JYW	JYW	JYW	JYW	JYW	●	●	●	●	
	22"	JYW	JYW	JYW	JYW	JYW	JYW	JYW	JYW	JYW	●	●	●	●	
	23"	N/A	N/A	N/A	N/A	JYW	JYW	JYW	JYW	JYW	JYW	JYW	JYW	JYW	
	24"	N/A	N/A	N/A	N/A	JYW	JYW	JYW	JYW	JYW	JYW	JYW	JYW	●	

Product Size Availability: ● Standard size available JYW Size available through JAY Your Way N/A Size not available

JAY SPECIALTY CUSHIONS

JAY ACTIVE

The JAY® Active is a pre-contoured foam cushion with a JAY Flow™ fluid pad and AirExchange™ cover, designed for the active client at low risk of skin breakdown, who requires mild to moderate positioning.



		WIDTH												
		12"	13"	14"	15"	16"	17"	18"	19"	20"	21"	22"	23"	24"
DEPTH	12"	JYW	JYW	JYW	JYW	JYW	JYW	JYW	N/A	N/A	N/A	N/A	N/A	N/A
	13"	JYW	JYW	JYW	JYW	JYW	JYW	JYW	N/A	N/A	N/A	N/A	N/A	N/A
	14"	JYW	JYW	JYW	JYW	JYW	JYW	JYW	JYW	JYW	N/A	N/A	N/A	N/A
	15"	JYW	JYW	JYW	JYW	JYW	JYW	JYW	JYW	JYW	N/A	N/A	N/A	N/A
	16"	JYW	JYW	●	JYW	●	JYW	●	JYW	JYW	N/A	N/A	N/A	N/A
	17"	N/A	N/A	JYW	JYW	JYW	JYW	JYW	JYW	JYW	N/A	N/A	N/A	N/A
	18"	N/A	N/A	JYW	JYW	●	JYW	●	JYW	●	N/A	N/A	N/A	N/A
	19"	N/A	N/A	JYW	JYW	JYW	JYW	JYW	N/A	N/A	N/A	N/A	N/A	N/A
	20"	N/A	N/A	JYW	JYW	●	JYW	●	N/A	N/A	N/A	N/A	N/A	N/A
	21"	N/A	N/A	N/A	N/A	N/A	N/A	N/A	N/A	N/A	N/A	N/A	N/A	N/A
	22"	N/A	N/A	N/A	N/A	N/A	N/A	N/A	N/A	N/A	N/A	N/A	N/A	N/A
	23"	N/A	N/A	N/A	N/A	N/A	N/A	N/A	N/A	N/A	N/A	N/A	N/A	N/A
24"	N/A	N/A	N/A	N/A	N/A	N/A	N/A	N/A	N/A	N/A	N/A	N/A	N/A	

Cushion Comparison				
Lateral Stability	2	3	4	5
Forward Stability	2	3	4	5
Pressure Management	2	3	4	5

Technical Specifications	
HCPCS Code	N/A
Width Range	14" to 20"
Depth Range	16" to 20"
Weight	6.5 lbs (16"x16")
Height	2.5"
Weight Capacity	250 lbs
JAY Your Way Modifications Avail.	Yes
Positioning	No

JAY LITE

The JAY® Lite is an extremely lightweight foam cushion that provides superior pressure distribution, heat and moisture dissipation, and optimal stability in a maintenance free design.



		WIDTH												
		12"	13"	14"	15"	16"	17"	18"	19"	20"	21"	22"	23"	24"
DEPTH	12"	N/A	N/A	N/A	N/A	N/A	N/A	N/A	N/A	N/A	N/A	N/A	N/A	N/A
	13"	N/A	N/A	N/A	N/A	N/A	N/A	N/A	N/A	N/A	N/A	N/A	N/A	N/A
	14"	N/A	N/A	●	JYW	JYW	JYW	JYW	JYW	JYW	N/A	N/A	N/A	N/A
	15"	N/A	N/A	JYW	●	●	●	JYW	JYW	JYW	JYW	N/A	N/A	N/A
	16"	N/A	N/A	●	●	●	●	●	●	JYW	JYW	N/A	N/A	N/A
	17"	N/A	N/A	JYW	●	●	●	●	●	JYW	JYW	JYW	JYW	N/A
	18"	N/A	N/A	●	●	●	●	●	●	JYW	●	JYW	●	●
	19"	N/A	N/A	N/A	JYW	●	JYW	●	JYW	JYW	JYW	JYW	JYW	JYW
	20"	N/A	N/A	N/A	N/A	●	JYW	●	●	●	JYW	●	JYW	●
	21"	N/A	N/A	N/A	N/A	N/A	JYW	JYW	JYW	JYW	JYW	JYW	JYW	JYW
	22"	N/A	N/A	N/A	N/A	N/A	N/A	JYW	JYW	JYW	JYW	●	JYW	●
	23"	N/A	N/A	N/A	N/A	N/A	N/A	N/A	JYW	JYW	JYW	JYW	JYW	JYW
24"	N/A	N/A	N/A	N/A	N/A	N/A	N/A	N/A	N/A	JYW	JYW	JYW	●	

Cushion Comparison				
Lateral Stability				5
Forward Stability		3	4	5
Pressure Management	2	3	4	5

Technical Specifications	
HCPCS Code	E2603 & E2607
Width Range	14" to 24"
Depth Range	14 to 24"
Weight	1.65 lbs (16"x16")
Height	3.4" (E2603/4), 4.5" (E2607/8)
Weight Capacity	250 lbs
JAY Your Way Mods Avail	Yes
Positioning	Yes

JAY J-GEL

The JAY® J-Gel cushion features pre-contoured foam in combination with a gel overlay and is ideal for the client at low to moderate risk of skin breakdown, who requires mild support.



		WIDTH												
		12"	13"	14"	15"	16"	17"	18"	19"	20"	21"	22"	23"	24"
DEPTH	12"	N/A	N/A	N/A	N/A	N/A	N/A	N/A	N/A	N/A	N/A	N/A	N/A	N/A
	13"	N/A	N/A	N/A	N/A	N/A	N/A	N/A	N/A	N/A	N/A	N/A	N/A	N/A
	14"	N/A	N/A	N/A	N/A	N/A	N/A	N/A	N/A	N/A	N/A	N/A	N/A	N/A
	15"	N/A	JYW	JYW	JYW	JYW	JYW	JYW	JYW	JYW	N/A	N/A	N/A	N/A
	16"	N/A	JYW	●	JYW	●	●	●	JYW	●	N/A	N/A	N/A	N/A
	17"	N/A	JYW	JYW	JYW	JYW	JYW	JYW	JYW	JYW	N/A	N/A	N/A	N/A
	18"	N/A	JYW	●	JYW	●	●	●	JYW	●	N/A	N/A	N/A	N/A
	19"	N/A	N/A	N/A	JYW	JYW	JYW	JYW	N/A	N/A	N/A	N/A	N/A	N/A
	20"	N/A	N/A	N/A	JYW	●	●	●	N/A	N/A	N/A	N/A	N/A	N/A
	21"	N/A	N/A	N/A	N/A	N/A	N/A	N/A	N/A	N/A	N/A	N/A	N/A	N/A
	22"	N/A	N/A	N/A	N/A	N/A	N/A	N/A	N/A	N/A	N/A	N/A	N/A	N/A
	23"	N/A	N/A	N/A	N/A	N/A	N/A	N/A	N/A	N/A	N/A	N/A	N/A	N/A
24"	N/A	N/A	N/A	N/A	N/A	N/A	N/A	N/A	N/A	N/A	N/A	N/A	N/A	

Cushion Comparison				
Lateral Stability	2	3	4	5
Forward Stability	2	3	4	5
Pressure Management	3	4	5	

Technical Specifications	
HCPCS Code	N/A
Width Range	14" to 20"
Depth Range	16" to 18"
Weight	6 lbs (16"x16")
Height	2.5"
Weight Capacity	250 lbs
JAY Your Way Modifications Avail.	Yes
Positioning	No

JAY DUO

The JAY® Duo™ features an integrated, contoured solid seat pan with a soft foam and fluid seat cushion. The Duo provides optimal comfort and skin protection without affecting seat-to-floor height for the client at moderate risk of skin break breakdown, who requires mild positioning.



		WIDTH												
		12"	13"	14"	15"	16"	17"	18"	19"	20"	21"	22"	23"	24"
DEPTH	12"	N/A	N/A	N/A	N/A	N/A	N/A	N/A	N/A	N/A	N/A	N/A	N/A	N/A
	13"	N/A	N/A	N/A	N/A	N/A	N/A	N/A	N/A	N/A	N/A	N/A	N/A	N/A
	14"	N/A	N/A	N/A	N/A	N/A	N/A	N/A	N/A	N/A	N/A	N/A	N/A	N/A
	15"	N/A	N/A	N/A	N/A	N/A	N/A	N/A	N/A	N/A	N/A	N/A	N/A	N/A
	16"	N/A	N/A	N/A	N/A	●	●	●	N/A	●	N/A	N/A	N/A	N/A
	17"	N/A	N/A	N/A	N/A	N/A	N/A	N/A	N/A	N/A	N/A	N/A	N/A	N/A
	18"	N/A	N/A	N/A	N/A	●	●	●	N/A	●	N/A	N/A	N/A	N/A
	19"	N/A	N/A	N/A	N/A	N/A	N/A	N/A	N/A	N/A	N/A	N/A	N/A	N/A
	20"	N/A	N/A	N/A	N/A	N/A	N/A	N/A	N/A	N/A	N/A	N/A	N/A	N/A
	21"	N/A	N/A	N/A	N/A	N/A	N/A	N/A	N/A	N/A	N/A	N/A	N/A	N/A
	22"	N/A	N/A	N/A	N/A	N/A	N/A	N/A	N/A	N/A	N/A	N/A	N/A	N/A
	23"	N/A	N/A	N/A	N/A	N/A	N/A	N/A	N/A	N/A	N/A	N/A	N/A	N/A
24"	N/A	N/A	N/A	N/A	N/A	N/A	N/A	N/A	N/A	N/A	N/A	N/A	N/A	

Cushion Comparison				
Lateral Stability	2	3	4	5
Forward Stability		3	4	5
Pressure Management			4	5

Technical Specifications	
HCPCS Code	E2603
Width Range	16" to 20"
Depth Range	16" to 18"
Weight	5.8 lbs (16"x16")
Height	2.5"
Weight Capacity	250 lbs
JAY Your Way Modifications Avail.	Yes
Positioning	Yes

Product Size Availability: ● Standard size available JYW Size available through JAY Your Way N/A Size not available

JAY SPECIALTY CUSHIONS

JAY GS™

The JAY® GS™ incorporates the technologies of JAY Flow™ fluid and includes growth capabilities to allow the cushion to grow as the client grows. It is designed for the pediatric or adult client with high positioning needs who is at moderate to high risk of skin breakdown.



		WIDTH												
		10"	11"	12"	13"	14"	15"	16"	17"	18"	19"	20"	21"	22"
DEPTH	10"	JYW	JYW	JYW	N/A	N/A	N/A	N/A	N/A	N/A	N/A	N/A	N/A	N/A
	11"	JYW	JYW	JYW	N/A	N/A	N/A	N/A	N/A	N/A	N/A	N/A	N/A	N/A
	12"	JYW	JYW	JYW	JYW	JYW	JYW	JYW	JYW	JYW	N/A	N/A	N/A	N/A
	13"	●	JYW	JYW	JYW	JYW	JYW	JYW	JYW	JYW	JYW	N/A	N/A	N/A
	14"	JYW	JYW	JYW	JYW	JYW	JYW	JYW	JYW	JYW	JYW	JYW	JYW	JYW
	15"	JYW	JYW	●	JYW	JYW	JYW	JYW	JYW	JYW	JYW	JYW	JYW	JYW
	16"	N/A	JYW	JYW	JYW	JYW	JYW	JYW	JYW	JYW	JYW	JYW	JYW	JYW
	17"	N/A	JYW	JYW	JYW	●	JYW	JYW	JYW	JYW	JYW	JYW	JYW	JYW
	18"	N/A	JYW	JYW	JYW	JYW	JYW	JYW	JYW	JYW	JYW	JYW	JYW	JYW
	19"	N/A	N/A	N/A	JYW	JYW	JYW	●	JYW	JYW	JYW	JYW	JYW	JYW
	20"	N/A	N/A	N/A	JYW	JYW	JYW	JYW	JYW	●	JYW	JYW	JYW	JYW
	21"	N/A	N/A	N/A	JYW	JYW	JYW	JYW	JYW	JYW	JYW	JYW	JYW	JYW
22"	N/A	N/A	N/A	N/A	N/A	JYW	JYW	JYW	JYW	JYW	JYW	JYW	JYW	

Cushion Comparison			
Lateral Stability	4	5	
Forward Stability	3	4	5
Pressure Management	3	4	5

Technical Specifications	
HCPCS Code	N/A
Width Range	10" to 18"
Depth Range	13" to 20"
Weight	6.91 lbs
Height	2"
Weight Capacity	250 lbs
JAY Your Way Modifications Avail.	Yes
Positioning	No

JAY J2™ PLUS

The JAY® J2™ Plus, offering a weight capacity of 650 lbs, is a pre-contoured foam cushion that features a JAY Flow™ fluid tripod for superior skin protection and an easy to modify base with optional positioning components for optimal stability.



		WIDTH												
		14"	15"	16"	17"	18"	19"	20"	21"	22"	23"	24"	25"	26"
DEPTH	14"	N/A	N/A	N/A	N/A	N/A	N/A	N/A	N/A	N/A	N/A	N/A	N/A	N/A
	15"	N/A	N/A	N/A	N/A	N/A	N/A	N/A	N/A	N/A	N/A	N/A	N/A	N/A
	16"	N/A	N/A	N/A	N/A	N/A	N/A	N/A	N/A	N/A	N/A	N/A	N/A	N/A
	17"	N/A	N/A	N/A	N/A	N/A	N/A	N/A	N/A	N/A	N/A	N/A	N/A	N/A
	18"	N/A	N/A	N/A	N/A	N/A	N/A	●	●	●	●	●	●	●
	19"	N/A	N/A	N/A	N/A	N/A	N/A	●	●	●	●	●	●	●
	20"	N/A	N/A	N/A	N/A	N/A	N/A	●	●	●	●	●	●	●
	21"	N/A	N/A	N/A	N/A	N/A	N/A	●	●	●	●	●	●	●
	22"	N/A	N/A	N/A	N/A	N/A	N/A	●	●	●	●	●	●	●
	23"	N/A	N/A	N/A	N/A	N/A	N/A	N/A	N/A	N/A	N/A	N/A	N/A	N/A
	24"	N/A	N/A	N/A	N/A	N/A	N/A	N/A	N/A	N/A	N/A	N/A	N/A	N/A

Cushion Comparison			
Lateral Stability	4	5	
Forward Stability	3	4	5
Pressure Management	4	5	

Technical Specifications	
HCPCS Code	N/A
Width Range	20" to 26"
Depth Range	18" to 22"
Weight	7 lbs (16"x16")
Height	3.5"
Weight Capacity	650 lbs
JAY Your Way Modifications Avail.	Yes
Positioning	Yes

JAY GO

The JAY® GO Back features an easy to install Velcro® strap assembly, Dartex® moisture-resistant cover and wide straps designed for adjustability, convenience, and support.

Backrest Comparison					
Accommodating Postural Assymetries	1	2	3	4	5
Modular Design to Accommodate Evolving Presentations	1	2	3	4	5
Lateral Stability	1	2	3	4	5

Common Client Characteristics	
Has and meets payer's coverage criteria for a wheelchair	
May benefit from minimal posterior pelvic / thoracic support	
May prefer to not remove the back support in order to fold wheelchair for transport	

Component	Feature	Design Intent	Clinical Value
STRAP ASSEMBLY	Wide Velcro adjustment straps	Provide adjustable posterior pelvic stability	Support a larger surface area and discourage development of asymmetrical postures
FOAM	1 1/2" soft foam insert	Comfort	Promotes increased sitting tolerance
COVER	Dartex® coated Lycra® outer cover	Protects foam from moisture build up and is easy to clean	Helps with incontinence management
	Microclimatic cover	Dissipates heat and moisture	Reduces risk of skin breakdown



Technical Specifications	
HCPCS Code	E2611/E2612
Width Range	12" to 26"
Height	10" to 14" (Short) 15" to 19" (Tall)
Weight	1.7 lbs (18" wide, Tall)
Weight Capacity	300 lbs 500 lbs (22-24" widths)
Avail Hardware Styles	Velcro® back post attachment
Angle Adjustability	N/A
Width Adjustability	+2" to +4"
Fits Tubing Sizes	All
Headrest Mount Available	No
JAY Your Way Modifications Avail.	Yes

JAY BASIC

The JAY® Basic Back is designed to increase sitting tolerance and stability by adding a rigidizing component to the wheelchair that provides long-term postural support.

Backrest Comparison					
Accommodating Postural Assymetries	1	2	3	4	5
Modular Design to Accommodate Evolving Presentations	1	2	3	4	5
Lateral Stability	1	2	3	4	5

Common Client Characteristics	
Has and meets payer's coverage criteria for a wheelchair	
May benefit from mild posterior pelvic and thoracic support	
May require quick and easy removal of back shell from wheelchair	

Component	Feature	Design Intent	Clinical Value
SHELL	Rigid contoured shell	Provides posterior pelvic and mild lateral thoracic stability	Helps prevent development of asymmetrical postures
FOAM	Soft foam insert	Enhances comfort	Promotes increased sitting tolerance
HRDWARE	Optional clamp style	Offers angle adjustability with minimal loss of seat depth	Improves visual field range, respiratory and digestive functions
	Optional strap style	Allows for easy installation and removal	Promotes increased sitting tolerance and stability
COVER	Stretch outer cover	Reduces surface tension	Promotes proper immersion and reduces risk of skin breakdown



Technical Specifications	
HCPCS Code	E2611
Width Range	14" to 20"
Height	16", 18", 20"
Weight	1.57 lbs (Strap) 3.61 lbs (Clamp)
Weight Capacity	250 lbs
Avail Hardware Styles	4-Point or Strap
Angle Adjustability	10°
Width Adjustability	+1"
Fits Tubing Sizes	7/8" and 1"
Headrest Mount Available	No
JAY Your Way Modifications Avail.	No

JAY CARE

The JAY® Care Back was designed to accommodate a client with a fixed kyphotic thoracic spine by providing built-in lateral support, 39° of angle adjustability, and a customizable foam insert in a contoured shell.

Backrest Comparison	
Accommodating Postural Assymetries	5
Modular Design to Accommodate Evolving Presentations	2 3 4 5
Lateral Stability	4 5

Common Client Characteristics
May require accommodation of fixed kyphosis
May require optimal spinus process protection
May require moderate lateral stability
May require an open back angle to encourage trunk extension and visual orientation
May require quick and easy removal of back shell from wheelchair
May require mounting surface for head support



Technical Specifications	
HCPCS Code	E2615
Width Range	15" to 20"
Height	16.5" to 19"
Weight	4.5 lbs
Weight Capacity	250 lbs
Avail Hardware Styles	4-Point
Angle Adjustability	39°
Width Adjustability	+2"
Fits Tubing Sizes	7/8" to 1"
Headrest Mount Available	No
JAY Your Way Modifications Avail.	No

Component	Feature	Design Intent	Clinical Value
SHELL	Durable molded contoured shell with 4' of built-in lateral depth	Accommodates fixed kyphosis and provides lateral stability	Accommodates fixed spinal assymetries and reduces the risk of further progression
	39° of angle adjustability	Accommodates fixed kyphosis	Increases visual orientation, and improves digestion and respiratory function
FOAM	Soft, segmented foam insert	Reduces surface tension and peak pressures, and provides comfort that can be modified to meet unique needs	Accommodates fixed kyphotic postures, reduces risk of skin breakdown along spine, increases sitting tolerance and is customizable for changing user needs

JAY J2™/J2™ TALL

The JAY® J2™ Back is designed to provide posterior lateral pelvic stabilization along with enhanced trunk stability. It is lightweight and angle adjustable allowing for easy installation, fitting and removal to fold the wheelchair.

Backrest Comparison	
Accommodating Postural Assymetries	2 3 4 5
Modular Design to Accommodate Evolving Presentations	4 5
Lateral Stability	2 3 4 5

Common Client Characteristics
May require increased posterior pelvic stability
May require moderate lateral stability
May require an open back angle to encourage trunk extension and visual orientation
May require quick and easy removal of back shell from wheelchair
May require mounting surface for head support



Technical Specifications	
HCPCS Code	E2613
Width Range	12" to 20"
Height	12.5" to 16.5" (Std) 21" to 23" (Tall)
Weight	4.7 lbs
Weight Capacity	250 lbs
Avail Hardware Styles	4-Point
Angle Adjustability	15°
Fits Tubing Sizes	7/8" to 1"
Headrest Mount Available	Yes
JAY Your Way Modifications Avail.	Yes

Component	Feature	Design Intent	Clinical Value
SHELL	Lightweight, contoured shell	Provides posterior pelvic and lateral thoracic stability	Promotes proper postural positioning and helps prevent development of asymmetrical postures while encouraging a greater level of independence
	Optional tall back shell	Provides posterior pelvic and lateral thoracic stability for users with longer torso heights	Promotes proper postural positioning and helps prevent development of asymmetrical postures while encouraging a greater level of independence
FOAM	Pre-contoured foam insert	Provides comfort and pressure distribution	Increases sitting tolerance and reduces risk of skin breakdown
HRDWARE	4 point hardware	Offers angle adjustability	Increases visual orientation, and improves digestion and respiratory function
COVER	AirExchange™	Dissipates heat and moisture	Reduces risk of skin breakdown
ACCES-SORIES	Optional extended and offset lateral hardware kits with curved or flat pads	Provide lateral thoracic stability and positioning	Promote proper postural positioning and helps prevent development of asymmetrical postures while encouraging a greater level of independence

The JAY® J3™ backrest product line offers a multitude of width, height, and contour depth back shells to fit the back to the user. Each back is lightweight and adjustable, with numerous hardware choices allowing for easy installation.

JAY J3™ BACK

J3 Posterior	
Backrest Comparison	
Accommodating Postural Assymetries	3 4 5
Modular Design to Accommodate Evolving Presentations	4 5
Lateral Stability	2 3 4 5

J3 Posterior & Lateral	
Backrest Comparison	
Accommodating Postural Assymetries	4 5
Modular Design to Accommodate Evolving Presentations	4 5
Lateral Stability	3 4 5

J3 Posterior & Deep Lateral, J3 Posterior & Deep Contour	
Backrest Comparison	
Accommodating Postural Assymetries	4 5
Modular Design to Accommodate Evolving Presentations	5
Lateral Stability	5

Common Client Characteristics
May require maximum posterior pelvic stability
May require mild to maximum lateral stability
May require moderate spinus process protection
May require an open back angle to encourage trunk extension and visual orientation
May require quick and easy removal of back shell from wheelchair
May require mounting surface for head support
May require additional positioning components (Spine Align)



Component	Feature	Design Intent	Clinical Value
SHELL	4 unique contour designs. Options include Posterior, Posterior Lateral, Posterior Deep Lateral and Posterior Deep Contour.	Provide posterior pelvic and lateral thoracic stability	Promotes proper postural positioning and helps prevent development of asymmetrical postures while encouraging a greater level of independence
	Up to 4 support heights and shapes dependent on contour shell selected. Options include lower thoracic, mid thoracic, upper thoracic or shoulder height.	Offers appropriate trunk support for a wide range of user torso heights and levels of injury	Promotes proper level of support based on client's functional needs and necessary trunk stability
	Optional Heavy Duty shell with 500 lb. weight capacity	Posterior pelvic and lateral thoracic stability	Promotes proper postural positioning and helps prevent development of asymmetrical postures while encouraging a greater level of independence
FOAM	Soft foam insert	Enhances comfort and distributes pressure	Increases sitting tolerance and reduces risk of skin breakdown
HRDWARE	5 Hardware options. Options include 2 point and 4 point in Standard and Extended as well as a Lite Mount option	Offer angle and width adjustability for a wide range of chair configurations and user needs	Increase visual orientation, and improve digestion and respiratory function
COVER	Microclimatic with 3DX™ Spacer Fabric outer cover with additional options available through JAY® Your Way	Dissipates heat and moisture	Reduces risk of skin breakdown
ACCES-SORIES	Spine Align posture conforming inserts	Allow proper adjustment in the field to accommodate clients unique and changing needs	Contour to individual shape and maximize loading surface
	Wide range of optional lateral positioning components	Provides lateral thoracic stability and positioning	Promotes proper postural positioning and helps prevent development of asymmetrical postures while encouraging a greater level of independence

Technical Specifications

HCPCS Code	E2613/E2614 (Posterior), E2615 (Post. & Lat.), E2620 (Post. Dp Lat, Post. Dp Cont.)	Available Hardware Styles	2-Point, 4-Point, Lite Mount, HD 4-Point
Width Range	12" to 26"	Angle Adjust.	22°
Height	6.5", 8", 9.5" (Lower Thoracic)	Width Adjust.	+2"
	12", 13.5", 15" (Mid Thoracic)	Fits Tubing Size	3/4" to 1 1/8"
	16.5", 18", 19.5" (Upper Thoracic)	Headrest Mount	Yes (select heights)
Weight Cap.	300 lbs (12" to 20" width), 500 lbs (22" to 26" width)	JAY Your Way Mods Avail.	Yes



Left to right:
 J3 Posterior & Deep Contour (shown in shoulder height)
 J3 Posterior & Deep Lateral (shown in shoulder height)
 J3 Posterior & Lateral (shown in upper thoracic height)
 J3 Posterior & Lateral (shown in mid thoracic height)
 J3 Posterior (shown in lower thoracic height)

JAY SPECIALTY BACKS

JAY FOCUS POINT

The JAY® Focus Point Back is a 3-piece contoured backrest featuring a reinforced contoured aluminum shell, multi-adjustable lateral "wings," and a pelvic wedge for additional posterior pelvic support.



Backrest Comparison			
Accommodating Postural Assymetries	3	4	5
Modular Design to Accommodate Evolving Presentations		4	5
Lateral Stability			5

Technical Specifications	
HCPCS Code	E2615
Width Range	14" to 21"
Height	14" to 20"
Weight	8.69 lbs
Weight Capacity	250 lbs
Avail Hardware Styles	4-Point
Angle Adjustability	65°
Width Adjustability	+1"
Fits Tubing Sizes	7/8", 1", 1-1/8"
Headrest Mount Available	Yes
JAY Your Way Modifications Avail.	No

JAY ENCOMPASS

The JAY® Encompass Back is a fully customizable seating solution that offers a wide range of sizes and specifications, including custom laterals and foam selections. Its 3-piece swing-away laterals provide outstanding lateral and anterior stability without inhibiting the ability to transfer.



Backrest Comparison			
Accommodating Postural Assymetries	3	4	5
Modular Design to Accommodate Evolving Presentations		4	5
Lateral Stability			5

Technical Specifications	
HCPCS Code	E2617
Width Range	14" to 25"
Height	12" to 28"
Weight	8.0 lbs
Weight Capacity	250 lbs
Avail Hardware Styles	4-Point
Angle Adjustability	15°
Width Adjustability	N/A
Fits Tubing Sizes	7/8" and 1"
Headrest Mount Available	Yes
JAY Your Way Modifications Avail.	No

JAY J2™ DEEP CONTOUR

The JAY® J2™ Deep Contour Back is designed to provide posterior lateral pelvic stabilization along with enhanced trunk stability. It features a deep contoured shell, foam insert, AirExchange™ cover, two lateral support wedges, and two lateral posterior pelvic supports for customized stability.



Backrest Comparison		
Accommodating Postural Assymetries	4	5
Modular Design to Accommodate Evolving Presentations	4	5
Lateral Stability	4	5

Technical Specifications	
HCPCS Code	E2615
Width Range	14" to 20"
Height	17" to 20"
Weight	5.9 lbs
Weight Capacity	250 lbs
Avail Hardware Styles	4-Point
Angle Adjustability	15°
Width Adjustability	up to 2" w/offset hrdwr
Fits Tubing Sizes	7/8" to 1"
Headrest Mount Available	Yes
JAY Your Way Modifications Avail.	Yes

JAY J2™ PLUS

The JAY® J2™ Plus Back is a bi-angular backrest specifically designed to address the pelvic and trunk stability needs of bariatric clients.



Backrest Comparison		
Accommodating Postural Assymetries	3	4 5
Modular Design to Accommodate Evolving Presentations	3	4 5
Lateral Stability	3	4 5

Technical Specifications	
HCPCS Code	E2613/E2614
Width Range	20" to 26"
Height	20.5"
Weight	11 lbs
Weight Capacity	650 lbs
Avail Hardware Styles	Heavy Duty 4-Point
Angle Adjustability	15°
Width Adjustability	+3"
Fits Tubing Sizes	7/8" to 1-1/4"
Headrest Mount Available	Yes
JAY Your Way Modifications Avail.	Yes

Please see the product pages for detailed standard availability.

COVERS

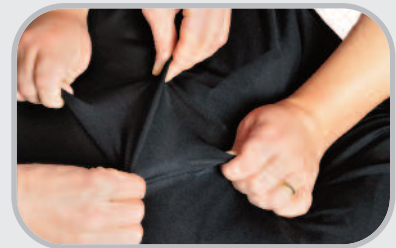
The following cover options are available on select products through the JAY Your Way custom modification program.

SEALED INNER COVER

- Designed to be used underneath outer JAY® cover.
- Stretchable Lycra® reduces surface tension
- Polyurethane coating makes cover easy to wipe off and clean
- Aquaguard zipper and orange, anti-wicking seam thread prevent moisture from seeping through zipper and damaging the foam base

JAY STRETCH ZIPPER COVER

- Pleated, 4-way Stretch material reduces surface tension
- Zipper provides a secure fit and protection for the foam base



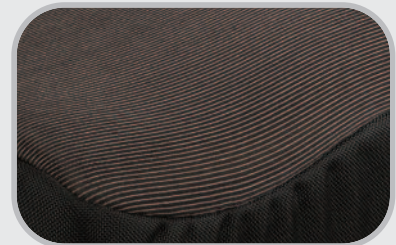
INCONTINENT RESISTANT BALLISTIC-STRETCH OR ZIPPER COVER

- Semi-plastic coating can be wiped off and dried to prevent moisture build-up and skin breakdown
- Semi-plastic coating prevents moisture from damaging the foam base
- Closure Style: - **Ballistic stretch** edge makes cover easy to remove
- **Zipper** provides a secure fit and protection for the foam base



X-STATIC® COVER WITH BREATHABLE SPACER FABRIC

- X-static® silver-impregnated material inhibits bacterial growth
- 4-Way stretch reduces surface tension
- Breathable Spacer Fabric promotes airflow and reduces moisture build-up



DARTEX® COVER WITH AQUAGUARD™ ZIPPER

- Cloth surface prevents sliding
- 4-Way Stretch reduces surface tension
- Dartex® coating and Aquaguard zipper prevent moisture from seeping through zipper and damaging the foam base
- Sometimes preferred over Dartex® because of material's feel against skin



REVERSE DARTEX® COVER WITH AQUAGUARD ZIPPER

- Water-resistant Reverse Dartex® coating makes cushion easy to wipe off and clean
- 4-Way Stretch reduces surface tension
- Aquaguard zipper prevents moisture from seeping through zipper and damaging the foam base



Please see the product pages for detailed standard availability.

OPTIONS AND ACCESSORIES

BACK HARDWARE

TWO-POINT

- One attachment point on each back cane
- Simple and quick installation
- Numerous mounting options along back canes
- Quick release

LITE MOUNT

- Two attachment points on each back cane
- Lightest hardware solution on the market at .61 lbs.
- Provides extremely rigid mount to wheelchair

FOUR-POINT

- Two attachment points on each back cane
- Can withstand greater force and weight by distributing it across a wider area
- Provides rigid mount to wheelchair
- When combined with a Heavy Duty back shell, (i.e. JAY J2 Plus and JAY J3, 22" - 26"), can accommodate up to 650 lbs.

STRAP

- One strap on each side
- Cloth straps click around back posts for easy installation
- Used in conjunction with the wheelchair's existing back upholstery

LATERAL SUPPORTS

FIXED

- Provides customized lateral thoracic support
- Width and height adjustable

SWING-AWAY

- Provides customized lateral thoracic support
- Width and height adjustable
- Swing-away hardware allows for easy transfers out of the wheelchair

ANGLE-ADJUSTABLE SWING-AWAY

- Provides customized lateral thoracic support
- Width and height adjustable
- Swing-away hardware allows for easy transfers out of the wheelchair
- Angle adjustability accommodates the widest range of user needs by providing the most precise shape to match the user's posture

ACCESSORIES

JAY SOLID SEAT

- Improves posture by providing a firm, fully adjustable base of support
- Drop seat option
- Non-skid surface
- Includes mounting hardware

JAY PROTECTOR

- Provides pressure reduction on a limited basis while the user is sitting or moving about away from the wheelchair
- Fluid-filled cushion helps reduce pressure and shear while foam base assists in stable sitting



The following is a glossary of terms that will aid in understanding terminology used in the rehab field and in this JAY Cushion selection guide.

GLOSSARY OF TERMS

Activities of Daily Living

Daily activities performed by an individual in the home and/or outdoor environments. The ability or inability to perform these activities is commonly used as a means to measure an individual's function.

Anthropometric Data

Relating to the measurement of the size and proportions of the human body. Used in seating technology to determine foam firmness as it relates to cushion width.

Bony Prominence

Area of body where bone is projected. Common sites for soft tissue breakdown. May include the coccyx, ischial tuberosities or sacrum.

Bottoming Out

A condition that occurs when a client's tissue under the bony prominence displaces or compresses through the pressure-relieving material to an underlying hard surface.

Braden Scale

A validated risk assessment tool used to identify individuals at risk to develop pressure sores.

Coccyx

Commonly referred to as the tailbone, the coccyx is the lowest point of the vertebral column.

Decubitus Ulcer (also referred to as pressure sores or bedsores)

A skin lesion caused by such factors as unrelieved pressure, shearing, humidity, etc., most commonly seen over bony areas such as the ischial tuberosities. Decubitus ulcers are often preventable and very difficult to treat.

Immersion

The ability of the user to sink into a sitting surface for optimal pressure distribution and stability without increasing surface tension.

Ischial Tuberosity

Two bony prominences (seat bones) in the buttocks.

Lateral Thigh Support

Helps prevent high excessive or unwanted abduction of the hips or provides a counterpoint for control of hip external rotation.

Lateral Trunk Support

Helps provide lateral support to the thoracic spine.

Medial Thigh Support

Helps maintain the hips of the seated individual in a prescribed amount of abduction or prevents adduction of the hips.

Pelvic Loading Area (also referred to as PLA, OptiWell, or well)

The pre-contoured area of a cushion where the pelvis is immersed. The Pelvic Loading Area, or well, is important for pressure distribution and positioning.

Pelvic Obliquity

One side of the pelvis is lower than the other.

Pressure

Force/area.

Posterior Pelvic Tilt

Backward tilting of the top of the pelvis.

Sacrum

Lowest section of the spine, includes the coccyx and posterior aspect of the pelvis.

Scapula

The flat, triangular bone in the back of the shoulder (shoulder blade).

Shear

Friction that occurs when skin slides along the surface of a cushion. This irritation can result in skin breakdown.

Sitting Tolerance

The ability of an individual to remain in a comfortable seated position. Discomfort and pain can reduce sitting tolerance.

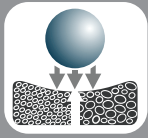
Thoracic Kyphosis

The outward curvature of the thoracic spine.

Trochanter

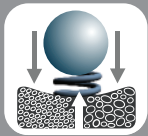
The bony prominence in the upper femurs where the hip connects with the pelvis.

PRODUCT DESIGN TERMS



Foam Density

Measured by pounds per cubic foot (PCF), foam density influences its durability. Regardless of foam firmness (or spring) it's important that density remains above 2.5 PCF for proper durability.



Foam Firmness

The spring back property of foam. Also referred to as IFD (Indentation Force Deflection), foam firmness is unrelated to its density.



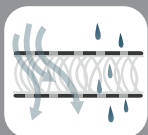
Firmness Layering

The use of multiple layers of materials with varying firmness to change a cushion's ability to distribute load. A common form of firmness layering is to use a firmer material under the thighs and a softer material under the ischial tuberosities to redistribute the load to the thigh region, helping to reduce the chance of tissue breakdown under the ischial tuberosities.



Hydrostatic Force

A force that is in balance or equally distributed. Hydrostatic forces occur in objects that immerse in fluids (liquid or gas). That is why people say they feel weightless when floating in water. Hydrostatic loading evenly distributes pressure to reduce buildup under sensitive areas of the pelvis which helps prevent decubitus ulcers. Because it is impractical to sit in a bowl of water, fluids (liquid or gas) must be held in a closed container. It is imperative that these containers be flexible and deep enough to easily reshape (allowing displacement) to accommodate the contour of the pelvis. If a fluid can't displace, it won't hydrostatically distribute the load.



Microclimatic Material

Microclimatic material is a material that encourages the passage of air, heat and water vapor away from the user. Tissue breakdown has been attributed to excess heat and moisture.



Positioning Capability

The creation of a shape by using one or a combination of the following techniques; pre-contouring, modifying the cushion material, adding or subtracting components, or controlling the volume and location of fluid. Without the ability to properly position, users who have either flexible or fixed postural abnormalities are at risk for increased skeletal problems.



Pre-contouring

The removal or reshaping of material to create a new shape that encourages distribution of seated pressure by matching the contours of the human body. Pre-contouring encourages distribution of seated pressure, offers stabilizing capabilities, increases comfort and sitting tolerance and can prevent the formation of decubitus ulcers.

Pressure Distribution vs. Peak Pressure Reduction

Pressure distribution is the act of evenly distributing, or equalizing, pressure over the entire sitting surface or contact area. Peak pressure reduction is the act of reducing pressure from at risk areas of the body that tend to bear the majority of the body's load, such as the ischial tuberosities or scapula.

Segmentation

Segmentation is the division of a material into segments to reduce tension within the material. Without segmentation, material tension prevents the pelvis from properly immersing into a material such as foam, gel or an air bladder. Segmentation allows these materials to better conform to the shape of the user, which effectively reduces peak pressures.



Stability

Stability is a cushion's ability to provide both lateral and forward stability. Poor postural stability can easily lead to:

- Skeletal deformities such as kyphosis, scoliosis, and lordosis.
- A poor hip position that compromises the pressure-relieving properties of the cushion.
- The increased likelihood of falling out of a seat or being unable to return to upright.



Tension Reduction

Tension is the state of being stretched or strained. It is important that cover materials do not hinder the ability of the user to immerse into the cushion or back material, as proper immersion, increases contact area and helps reduce peak pressure areas. Segmented foam and fluid containers also aid in tension reduction.





Customer Service: 800.333.4000
www.SunriseMedical.com

©07.2012 Sunrise Medical (US) LLC
0110 Rev.1