



Introducing the new Jay Zip backrest

Superior Clinical Seating.

The **Jay Zip** backrest is designed specifically for kids featuring paediatric sizes that are shaped for paediatric users and adjustable for growth.

Available from 8" - 15" wide .

Available heights:

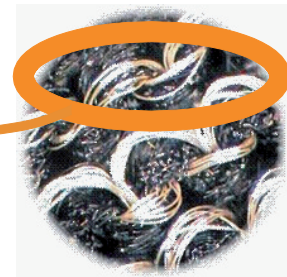
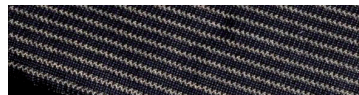
- 6" short
- 8" medium
- 10" tall
- 12" xtall



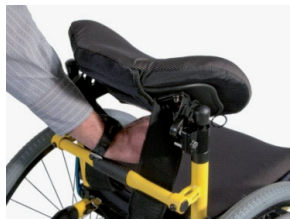
Depth adjustment provides up to 3" of depth growth. Each back also expands 1" wider.

BACKREST WIDTH	8"	10"	12"	14"
BACKCANE WIDTHS	8"-9"	10"-11"	12"-13"	14"-15"
MAX. USER TRUNK WIDTH	7"	9"	11"	13"
DEPTH OF CONTOUR	1"	1.5"	2"	2.5"

We all know that backrest covers become a virtual breeding ground for harmful, smelly microbes. For this reason, the JAY Zip back features a silver impregnated X-static® cover material. These silver fibres rapidly reduce microbial presence



In addition, it's loaded with adjustments. The backrest can angle 20° rearward or 20° forward. Height adjustment is easy with highly adjustable, low profile mounting hardware. In a hurry? Backrest removes easily with 1 hand.



For your more involved kiddo's, add laterals, headrest and anterior chest supports. Each designed and developed for paediatric uses.

Official launch is 1st of July 2012. Pricing starts from \$ 395. Stock due in late June.