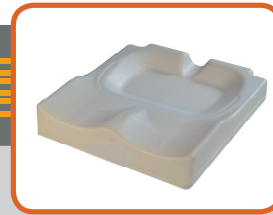


JAY[®] Easy Fluid

SIMPLY · EFFECTIVE · SEATING



Incontinence cover



Contoured soft foam base



Jay Fluid Tripad

Skin integrity with stability

Clinical Application:

- Client with mild symmetrical and mild asymmetric posture and moderate postural support requirements
- Moderate to high risk of skin breakdown and shear

Features:

- Bevelled rear to pass between backrest posts
- Sacral notch + Back cane cuts
- Microclimatic or incontinence cover
- Contoured foam base with fluid filled well for moderate / high pressure relief
- Solid Seat (option)

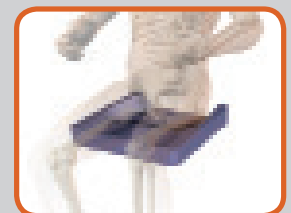
Clinical Performance

Factors	Product Assessment
Skin Protection	Jay Flow Fluid Tripad immerses ischials up to 3 cm
Shear Prevention	Partial displacement of pressure relief materials and covers in ischial zone
Stability Offered	Thigh and trochanter support provides lateral and posterior pelvic stability
Positioning Offered	Stable foam support base for moderate positioning
Comfort	Jay Flow and foam softness, support and shape enabling extensive periods seated
Clinical Benefit	Skin integrity with stability

Order Part No: JE Width, Depth, and Flat or Curved ie. JE1614F

Specifications

Positioning	Skin integrity with stability
Purpose	Skin integrity with stability and positioning for the active user
Skin Protection (Max score is 5)	3
Shear Prevention (Max score is 5)	4
Stability (Max score is 5)	4
Positioning (Max score is 5)	3
Comfort (Max score is 5)	5
User Weight	113 kg
Product Weight (MIN)	1.8 kg
Product Weight (MAX)	6 kg
Cushion Type	Open Cell Foam + Fluid
Cover Type	Incontinence, Air Exchange / Microclimatic
Width and Depth	25 - 60 cm
Height Front and Rear	6 cm
Guarantee and usage	2 years



Client seated on fluid pad



Applewood solid seat (option)