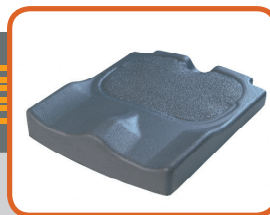


JAY[®] Easy Visco

| SIMPLY · EFFECTIVE · SEATING |



Incontinence cover



Contoured foam base with 'visco' insert



Applewood solid seat (option)

High level comfort and stability

Clinical Application:

- Client with mild symmetrical or mild asymmetrical posture and moderate postural support requirements
- Moderate risk of skin breakdown
- Client requires comfortable, no maintenance cushion

Features:

- Exceptionally light and comfortable
- Sacral notch and Back cane cuts
- Incontinence cover
- Choice of flat or bevelled bases for solid or sling seats
- Optional solid seats
- Visco foam filled well

Clinical Performance

Factors	Product Assessment
Skin Protection	2 cm ischial immersion into memory foam
Shear Prevention	Ischial immersion and increased contouring to limit sliding
Stability Provided	Thigh and trochanter support provides lateral and posterior pelvic stability
Positioning	Stable foam base for moderate positioning
Comfort	Exceptional softness, firmness and shape enabling prolonged periods seated
Clinical Benefit	High comfort and stability

Order Part No: JEV Width, Depth, and Flat or Curved ie. JEV2525

Specifications

Positioning	High level comfort and stability
Purpose	Lightweight cushions with high level comfort and stability
Skin Integrity (Max score is 5)	3
Shear (Max score is 5)	2
Stability (Max score is 5)	4
Positioning (Max score is 5)	3
Seating Tolerance (Max score is 5)	4
User Weight	113kg
Product Weight (MIN)	0.50 kg
Product Weight (MAX)	2.70 kg
Cushion Type	Open Cell Foam
Cover Type	Incontinence, Air Exchange / Microclimatic
Width and Depth	25 - 60 cm
Height Front and Rear	6 cm
Guarantee and usage	2 years

