

QUICKIE® M6



Haass

Hearing-impaired, albino Great Dane

THE GREAT ONE HAS ARRIVED.

The new Quickie® M6 has a weight capacity of 650 lbs. Just what you need to reach an expanding market, with the only brand you trust.



Quickie's first bariatric, manual wheelchair is made of high-strength steel and is modeled after the industry-leading Quickie 2.

 **SUNRISE
MEDICAL**

www.sunrisemedicalonline.com



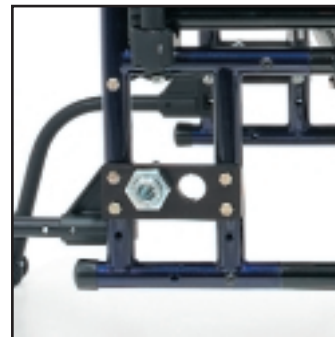
- Modular Frame**
 A variety of interchangeable frame components allows the Quickie® M6 to be adjusted as the rider's needs change. Even changing the width or depth of the chair is not a problem.



- Adjustable Back Height**
 Four heights available for optimal positioning.



- Lightweight**
 Weighing in at a meager 53 lbs. with hangers.
- Quickie style**
 Available in a wide variety of powder-coated colors. Unmistakably *Quickie*.



- Adjustable Axle Plate**
 Allows two center of gravity positions for better wheel access. Two heights are available by simply changing the caster size and adjusting the axle plate.



- Stabilizer bar**
 Reinforces backrest for an even more durable chair.

Specifications

Frame Width:	24"	26"	28"	30"
Overall Width:	32.5"	34.5"	36.5"	38.5"
Folded Width:	14"			
Weight:	53 lbs. w/legrests (26 x 20)			
Weight Capacity:	650 lbs.			

“My Quickie M6 has made it possible for a big guy like myself to still be an active member of society. It’s kept me from otherwise being a shut-in and has been a definite factor in my happiness. I like the fact that it’s very lightweight while still being so incredibly strong, supporting my higher-than-average body weight. I like its ability to fold easily, making transporting the chair in the trunk of my car possible. I can never thank Sunrise enough for meeting the needs of this disabled vet and making it possible for me to live as near normal a life as I have. My Quickie M6 has been a blessing. I’m sure it will be a blessing to many others as well.”

Carl Sartori, disabled veteran

